

MEDFIELD MEADOWS - AMENDED PLAN SET

(REPLACES ALL 'A' & 'T'-SERIES ARCHITECTURAL PLANS DATED '08-12-16')

MEDFIELD, MA

OWNER / DEVELOPER

MEDFIELD MEADOWS LLC.

12 Haven Street

Dover, MA 02030

DEVELOPMENT CONSULTANT

SEB LLC

165 Chestnut Hill Avenue #2

Brighton, MA 02135

ARCHITECT

WINSLOW ARCHITECTS, INC.

89 Massachusetts Avenue

Arlington, MA 02474

CIVIL ENGINEER

RONALD TIBERI, P.E.

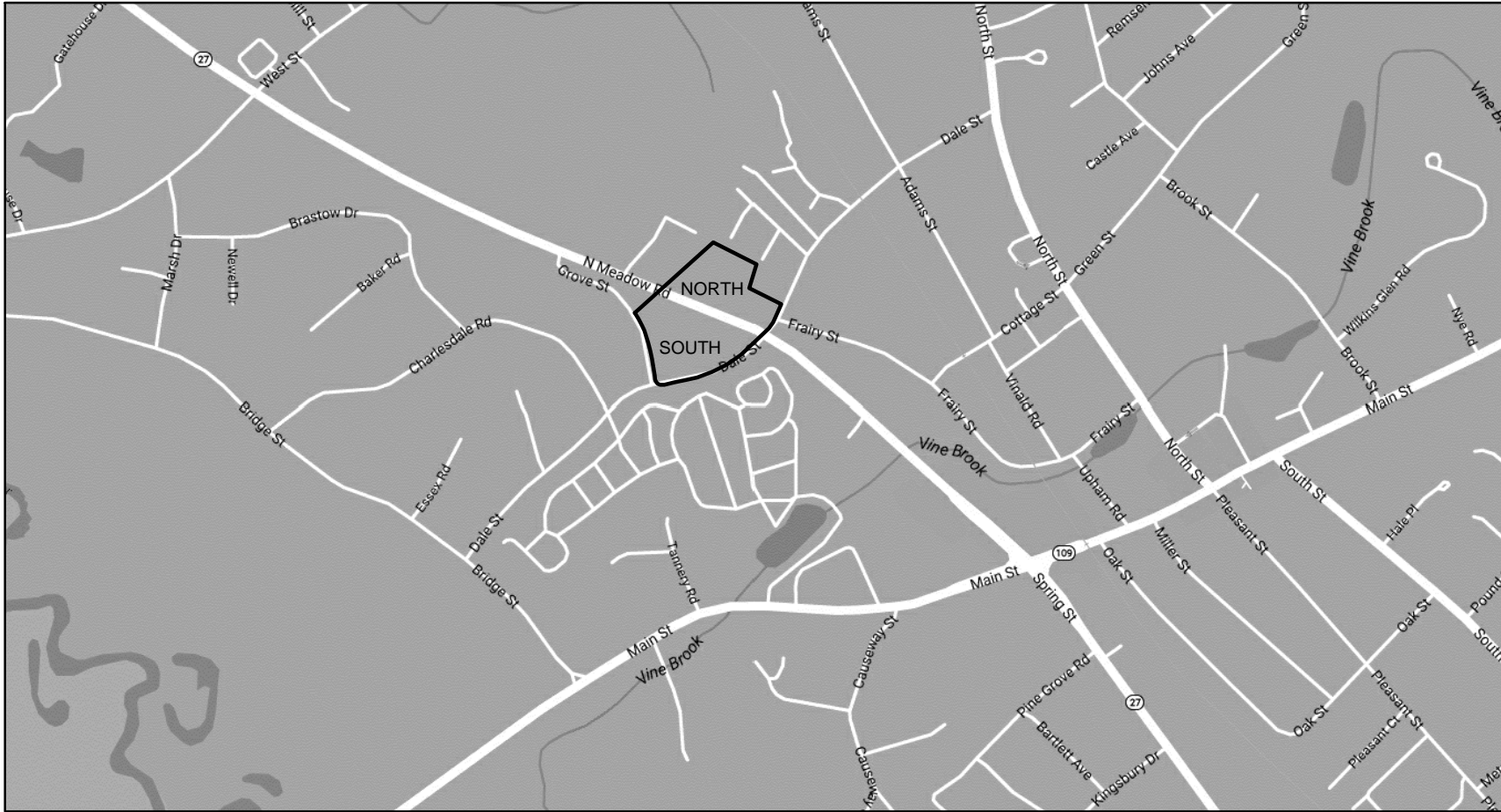
9 Massachusetts Avenue

Natick, MA 01760

CHENEY ENGINEERING CO, INC.

53 Mellen Street

Needham, MA 02494



LOCUS MAP

DEVELOPMENT SUMMARY	NORTH	SOUTH	TOTAL
LAND AREA:	3.28 ACRES	2.60 ACRES	5.88 ACRES
NO. OF BUILDINGS:	2 @ 3-4 STORIES	1 @ 3-4 STORIES	3 @ 3-4 STORIES
NO. OF UNITS:	98 UNITS	84 UNITS	182 UNITS
	31 - 1 BR	20 - 1 BR	51 - 1 BR
	47 - 2 BR	50 - 2 BR	97 - 2 BR
	20 - 3 BR	14 - 3 BR	34 - 3 BR
NO. OF PARKING SPACES:	152 SPACES	128 SPACES	280 SPACES
	34 - Surface	6 - Surface	40 - Surface
	118 - Below Building	122 - Below Building	240 - Below Building



LIST OF DRAWINGS			
T-1	TITLE SHEET		
T-2	BUILDING ELEVATIONS		
T-3	TYPICAL UNIT FLOOR PLANS		
1 A-0.1	ARCHITECTURAL SITE PLAN	2 A-0.1	ARCHITECTURAL SITE PLAN
1 A-1.0	PARKING LEVEL PLAN	2 A-1.0	UPPER PARKING LEVEL PLAN
1 A-1.1	FIRST FLOOR PLAN	2 A-1.1	LOWER PARKING LEVEL PLAN
1 A-1.2	SECOND FLOOR PLAN	2 A-1.2	FIRST FLOOR PLAN
1 A-1.3	THIRD FLOOR PLAN	2 A-1.3	SECOND FLOOR PLAN
1 A-1.4	FOURTH FLOOR PLAN	2 A-1.4	THIRD FLOOR PLAN
		2 A-1.5	FOURTH FLOOR PLAN

Date issued:

12-08-16



WINSLOW
ARCHITECTS
INC

89 MASSACHUSETTS AVE.
ARLINGTON, MA 02474
P: 781.648.6600
F: 781.648.6601
www.winslowarchitects.com

Owner/Developer:

MEDFIELD MEADOWS LLC

12 Haven Street
Dover, MA 02030

Project:

MEDFIELD
MEADOWS

Meadow Road / Dale Street
Medfield, MA 02052

Drawing:

TITLE
SHEET

Revisions:

No.	Description	Date

ANY REPRODUCTION, POSSESSION OR USE OF THIS
DRAWING WITHOUT THE WRITTEN PERMISSION OF
WINSLOW ARCHITECTS INC. IS PROHIBITED.
VIOLATORS WILL BE PROSECUTED TO THE FULL
EXTENT OF THE LAW.

© 2014 WINSLOW ARCHITECTS, INC.

Stamp:

Project number:

16-515

Sheet:

T - 1



2 MEDFIELD MEADOWS SOUTH - VIEW FROM DALE STREET
SCALE: 1/16" = 1'-0"



1 MEDFIELD MEADOWS NORTH - VIEW FROM N. MEADOW ROAD
SCALE: 1/16" = 1'-0"

Date issued:

12-08-16



89 MASSACHUSETTS AVE.
ARLINGTON, MA 02474
P: 781 648.6600
F: 781 648.6601
www.winslowarchitects.com

Owner/Developer:

MEDFIELD MEADOWS LLC

12 Haven Street
Dover, MA 02030

Project:

MEDFIELD MEADOWS

Meadow Road / Dale Street
Medfield, MA 02052

Drawing:

BUILDING ELEVATIONS

Revisions:

No.	Description	Date

ANY REPRODUCTION, POSSESSION OR USE OF THIS DRAWING WITHOUT THE WRITTEN PERMISSION OF WINSLOW ARCHITECTS INC. IS PROHIBITED. VIOLATORS WILL BE PROSECUTED TO THE FULL EXTENT OF THE LAW.

© 2014 WINSLOW ARCHITECTS, INC.

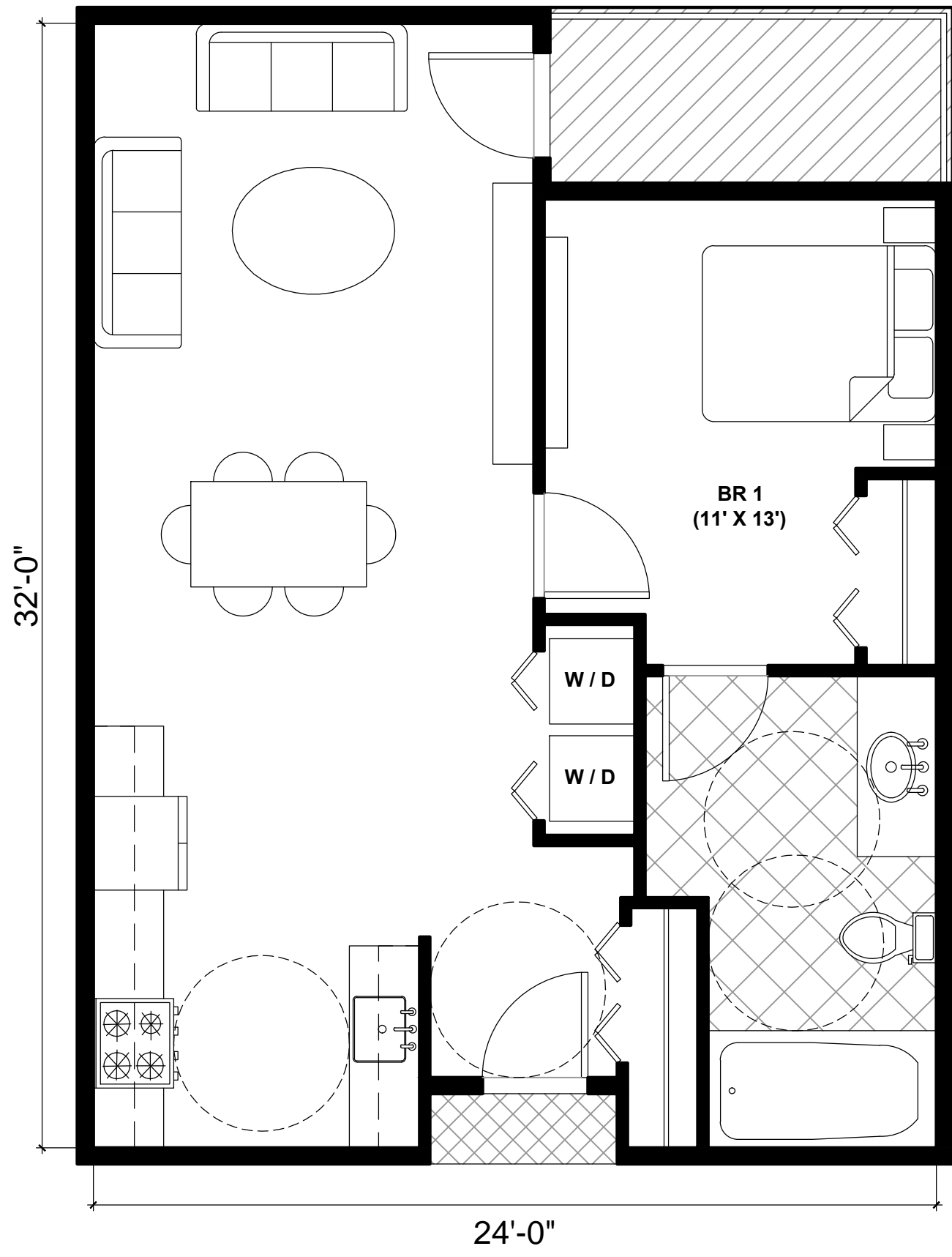
Stamp:

Project number:

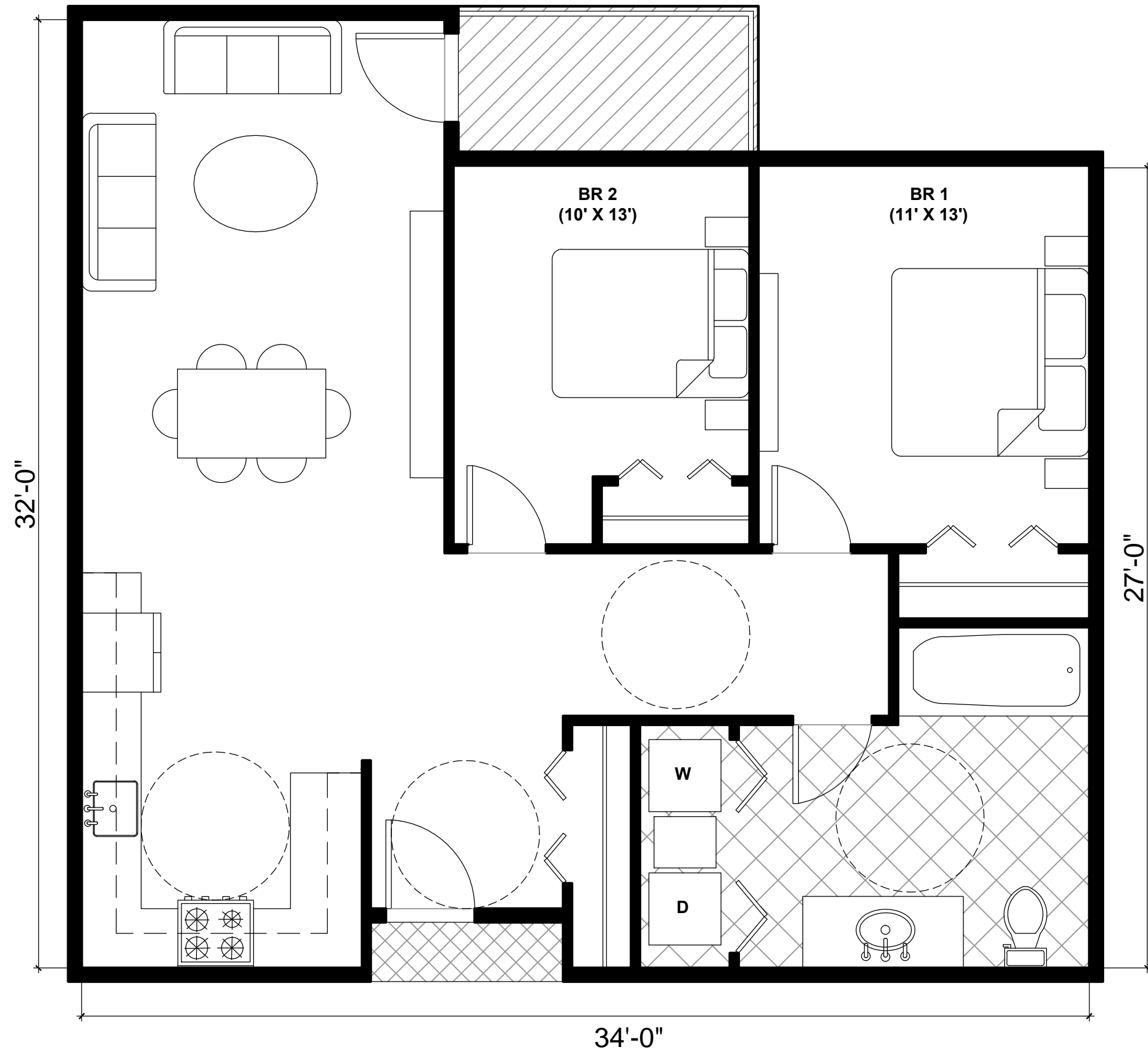
16-515

Sheet:

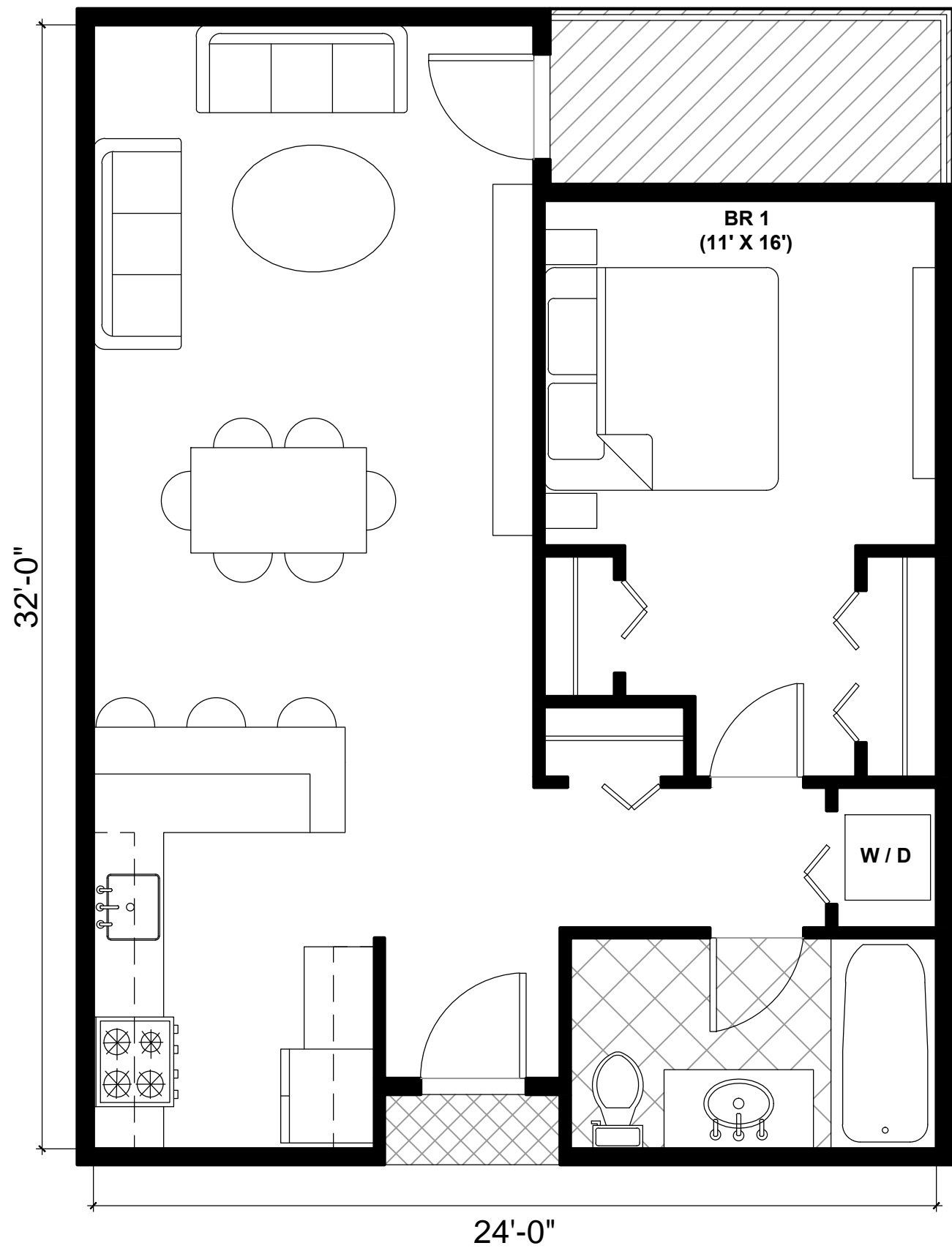
T-2



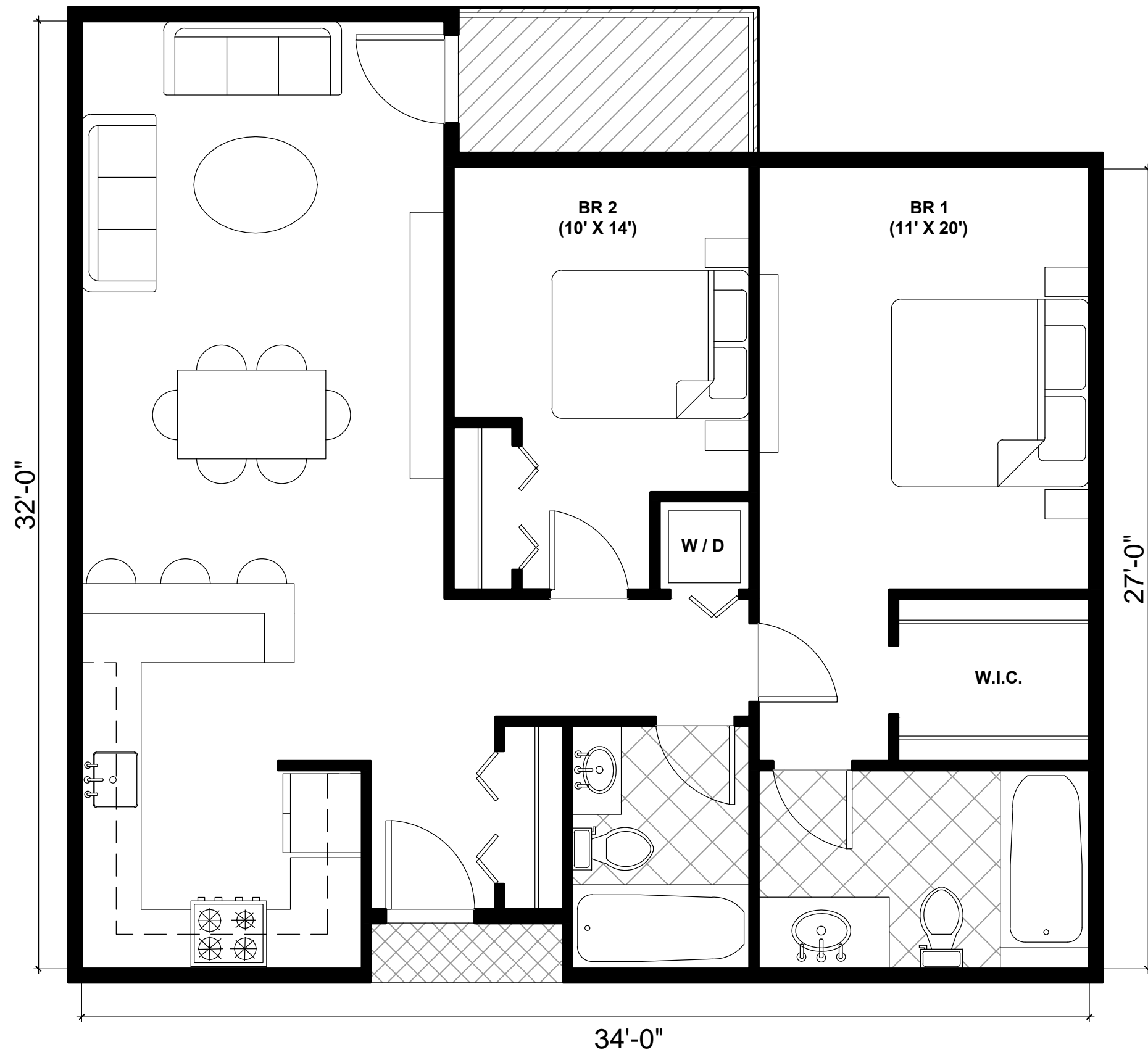
4 1 BR HANDICAP ACCESSIBLE UNIT (730 SQ. FT.)
UNIT TYPE 'D' SCALE: 1/4" = 1'-0"



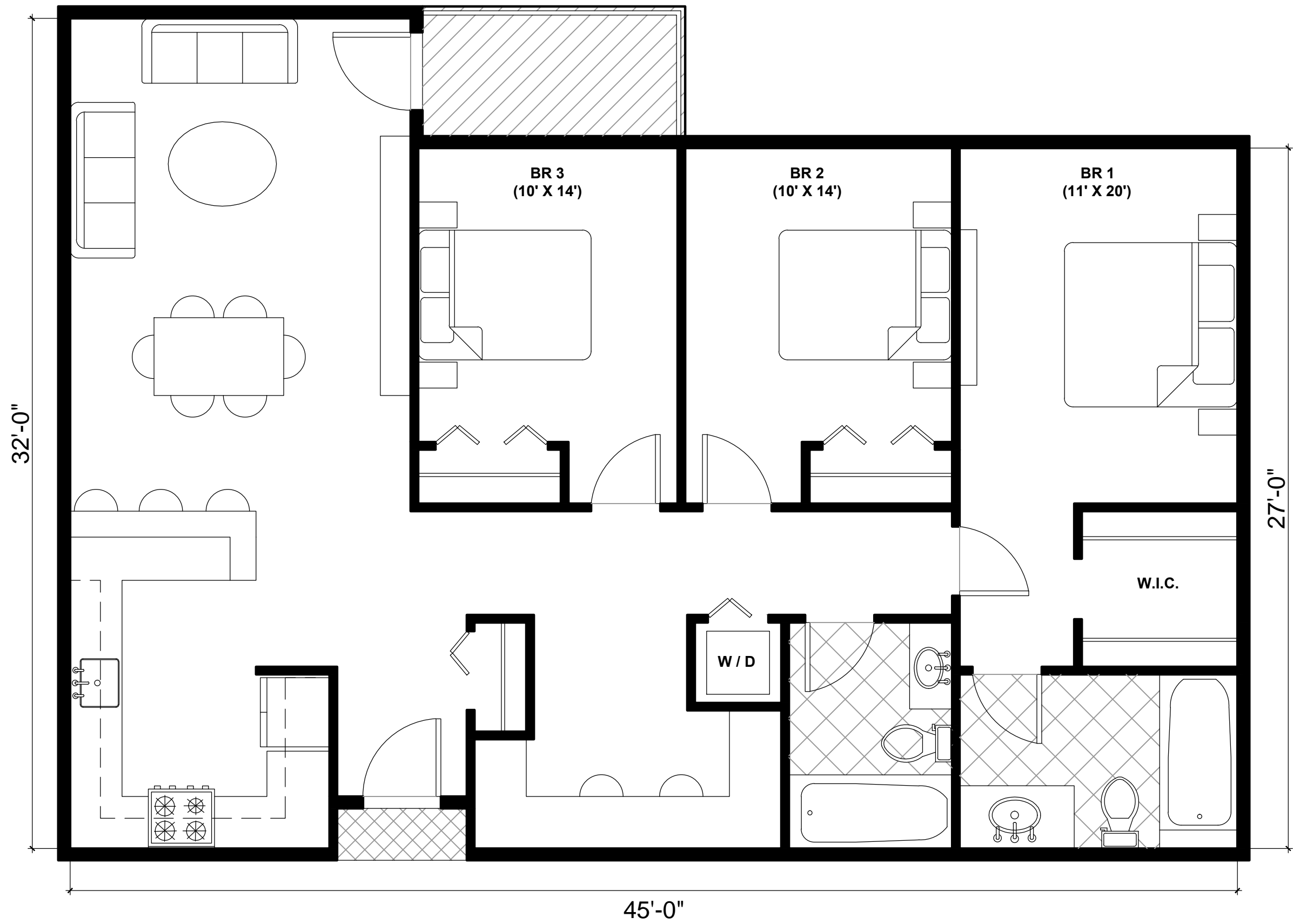
5 2 BR HANDICAP ACCESSIBLE UNIT (1010 SQ. FT.)
UNIT TYPE 'E' SCALE: 1/4" = 1'-0"



1 1 BR UNIT (730 SQ. FT.)
UNIT TYPE 'A' SCALE: 1/4" = 1'-0"



2 2 BR UNIT (1010 SQ. FT.)
UNIT TYPE 'B' SCALE: 1/4" = 1'-0"



3 3 BR UNIT (1320 SQ. FT.)
UNIT TYPE 'C' SCALE: 1/4" = 1'-0"

GENERAL NOTES

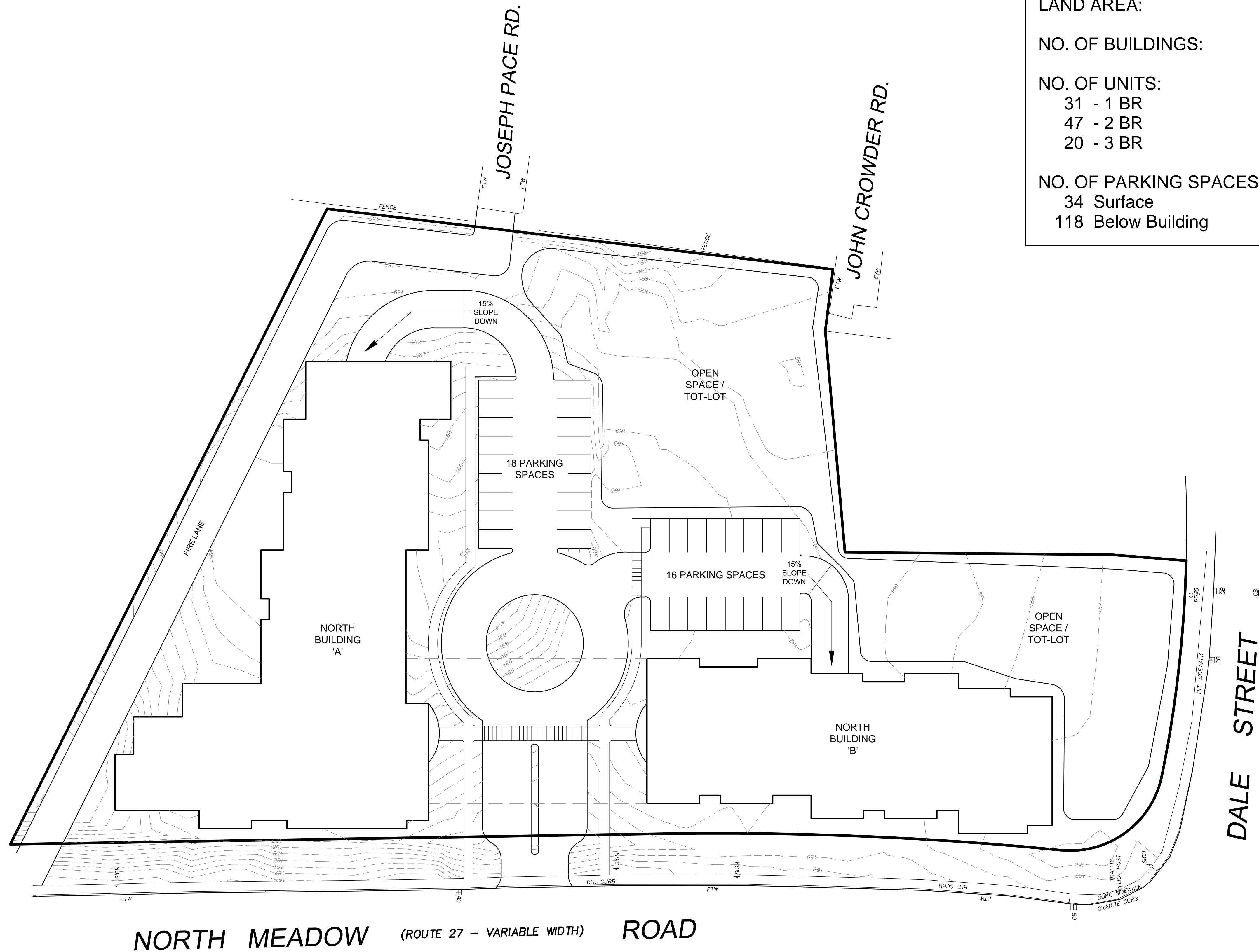
Revisions:

No.	Description	Date

ANY REPRODUCTION, POSSESSION OR USE OF THIS
DRAWING WITHOUT THE WRITTEN PERMISSION OF
WINSLOW ARCHITECTS INC. IS PROHIBITED.
VIOLATORS WILL BE PROSECUTED TO THE FULL
EXTENT OF THE LAW.

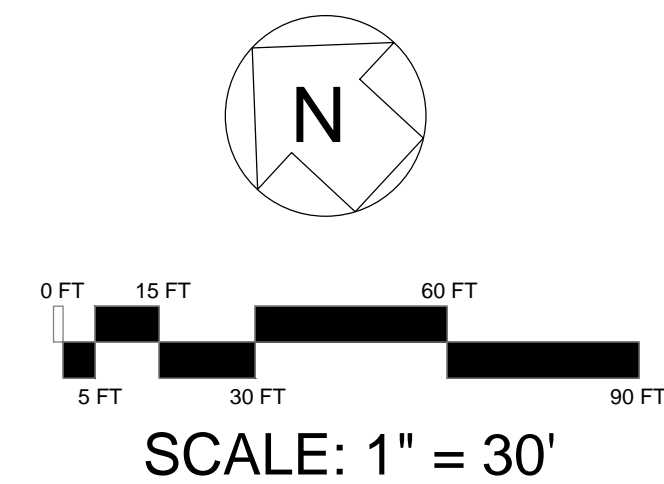
© 2014 WINSLOW ARCHITECTS, INC.

Stamp:



DEVELOPMENT SUMMARY - NORTH BUILDINGS	
LAND AREA:	3.28 ACRES
NO. OF BUILDINGS:	2 @ 3-4 STORIES
NO. OF UNITS:	98 UNITS
31 - 1 BR	
47 - 2 BR	
20 - 3 BR	
NO. OF PARKING SPACES:	152 SPACES
34 Surface	
118 Below Building	

1 NORTH - SITE PLAN



Date issued:
12-08-16



**WINSLOW
ARCHITECTS
INC**

89 MASSACHUSETTS AVE.
ARLINGTON, MA 02474
P: 781 648.6600
F: 781 648.6601
www.winslowarchitects.com

Owner/Developer:
MEDFIELD MEADOWS LLC

12 Haven Street
Dover, MA 02030

Project:
MEDFIELD MEADOWS

Meadow Road / Dale Street
Medfield, MA 02052

Drawing:
**NORTH -
ARCHITECTURAL
SITE PLAN**

Revisions:		
No.	Description	Date

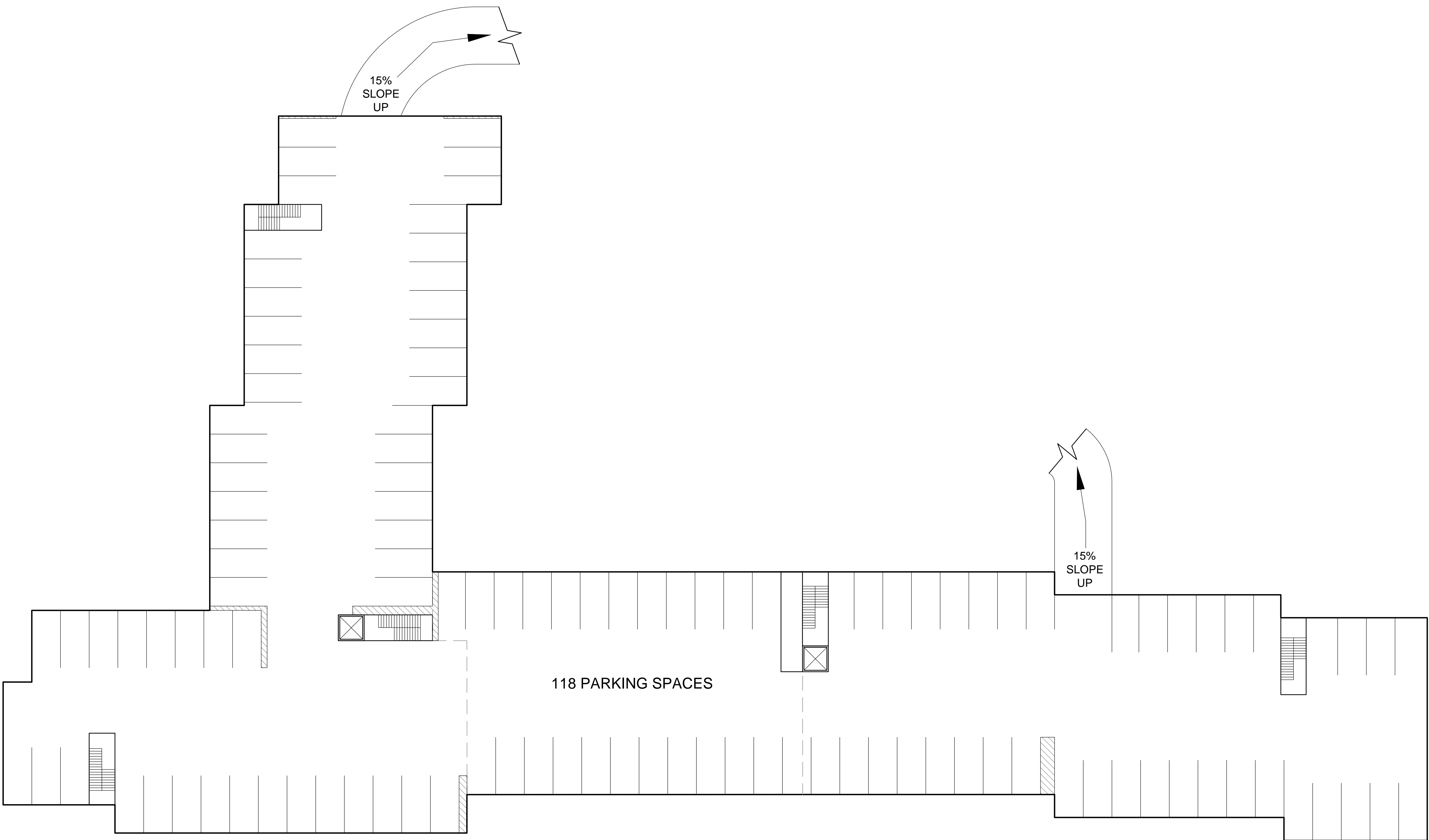
ANY REPRODUCTION, POSSESSION OR USE OF THIS
DRAWING WITHOUT THE WRITTEN PERMISSION OF
WINSLOW ARCHITECTS INC. IS PROHIBITED.
VIOLATORS WILL BE PROSECUTED TO THE FULL
EXTENT OF THE LAW.

© 2014 WINSLOW ARCHITECTS, INC.

Stamp:

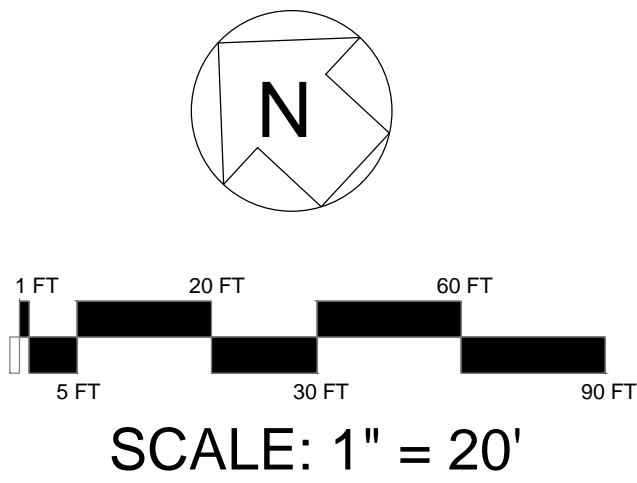
Project number:
16-515

Sheet:
1 | A-0.1



118 PARKING SPACES

1 NORTH - PARKING LEVEL PLAN
SCALE: 1" = 20'-0"



Revisions:

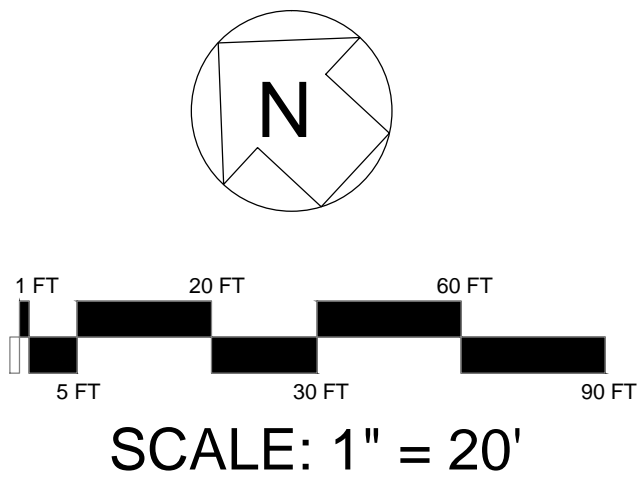
No.	Description	Date

ANY REPRODUCTION, POSSESSION OR USE OF THIS DRAWING WITHOUT THE WRITTEN PERMISSION OF WINSLOW ARCHITECTS INC. IS PROHIBITED. VIOLATORS WILL BE PROSECUTED TO THE FULL EXTENT OF THE LAW.

© 2014 WINSLOW ARCHITECTS, INC.



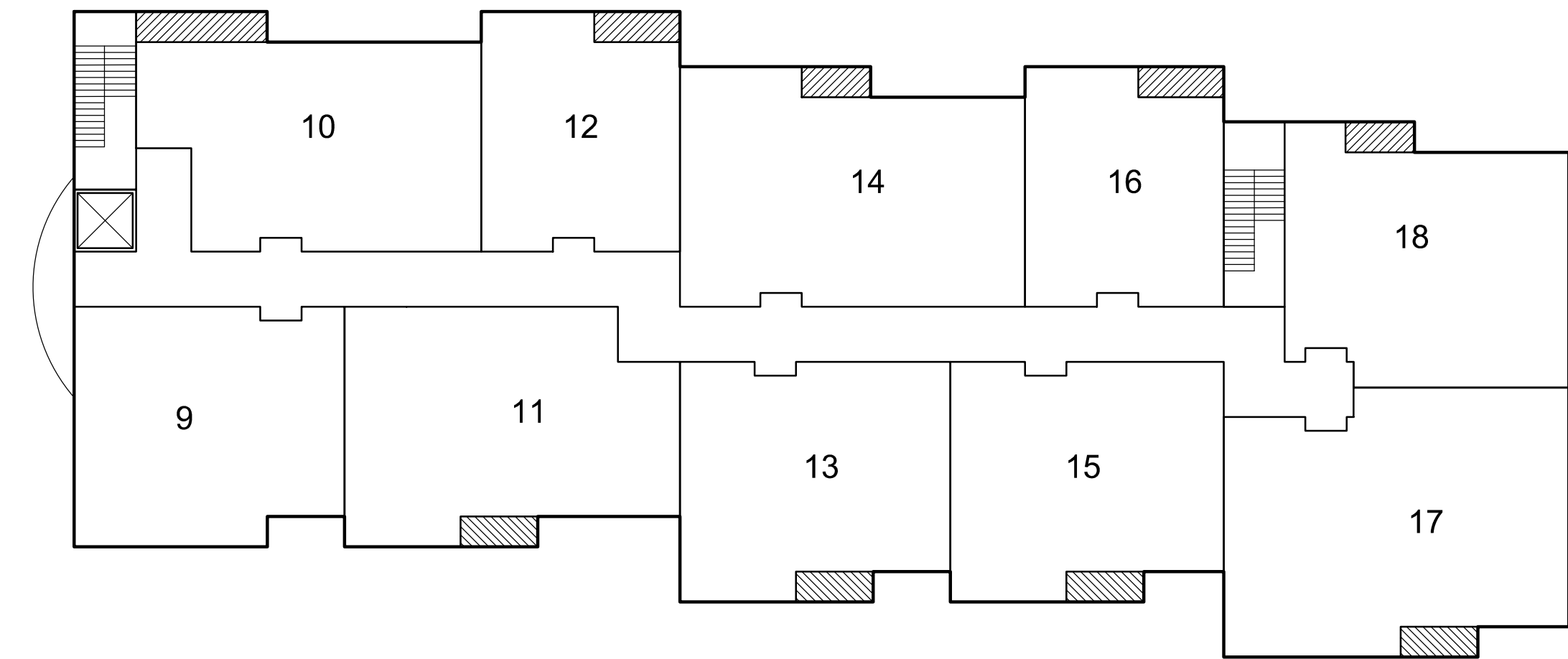
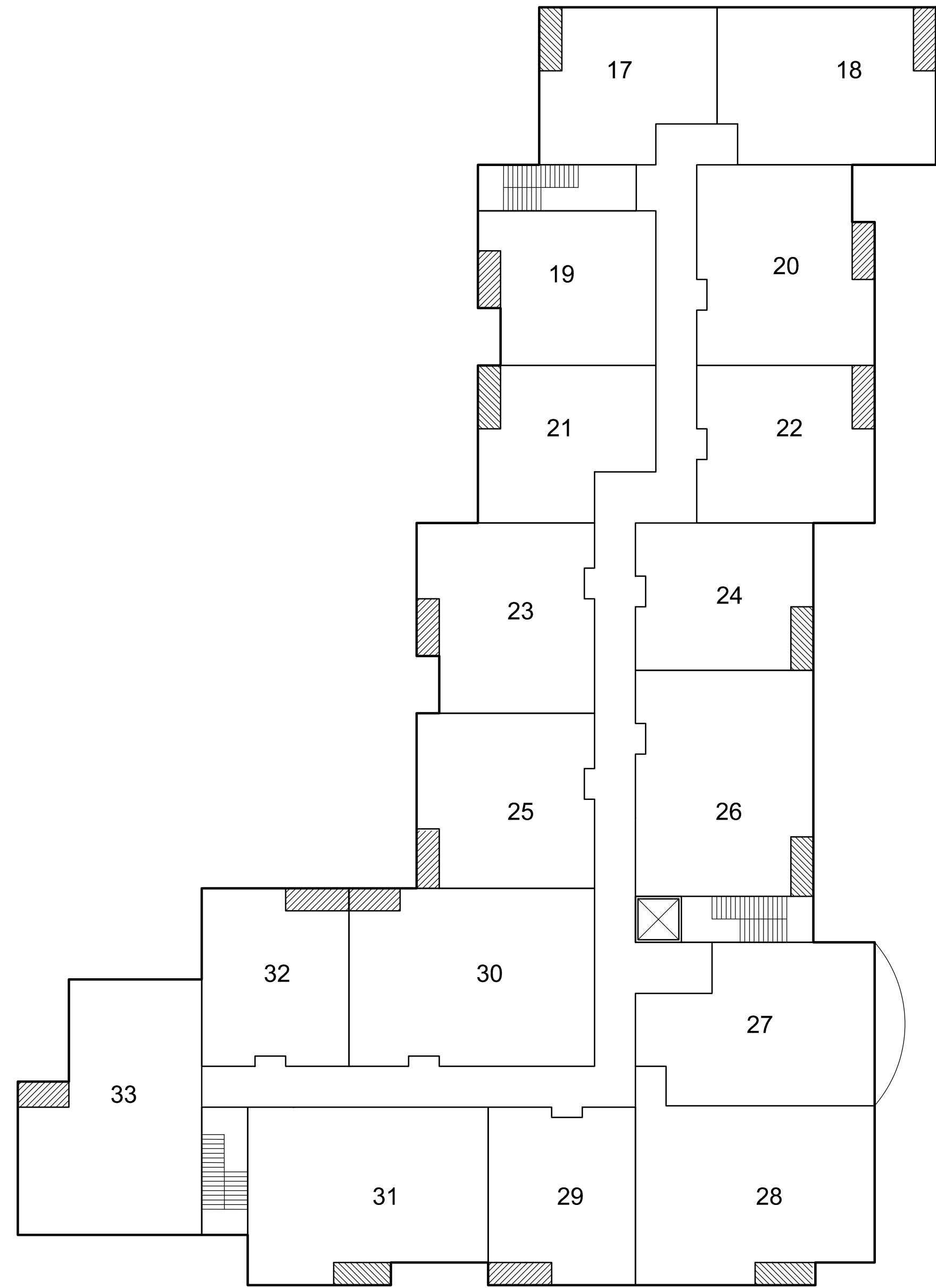
1 NORTH - FIRST FLOOR PLAN
SCALE: 1" = 20'-0"



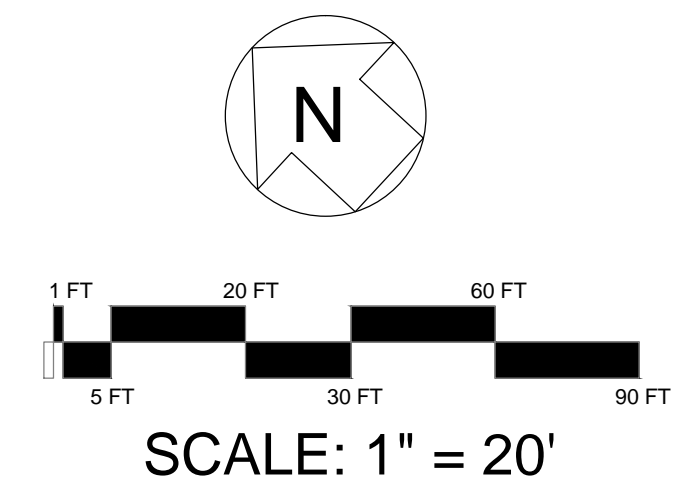
Revisions:		
No.	Description	Date

ANY REPRODUCTION, POSSESSION OR USE OF THIS DRAWING WITHOUT THE WRITTEN PERMISSION OF WINSLOW ARCHITECTS INC. IS PROHIBITED. VIOLATORS WILL BE PROSECUTED TO THE FULL EXTENT OF THE LAW.

© 2014 WINSLOW ARCHITECTS, INC.



1 NORTH - SECOND FLOOR PLAN
SCALE: 1" = 20'-0"



Date issued:
12-08-16



89 MASSACHUSETTS AVE.
ARLINGTON, MA 02474
P: 781 648.6600
F: 781 648.6601
www.winslowarchitects.com

Owner/Developer:
MEDFIELD MEADOWS LLC

12 Haven Street
Dover, MA 02030

Project:
MEDFIELD MEADOWS

Meadow Road / Dale Street
Medfield, MA 02052

Drawing:
NORTH - SECOND FLOOR PLAN

Revisions:		
No.	Description	Date

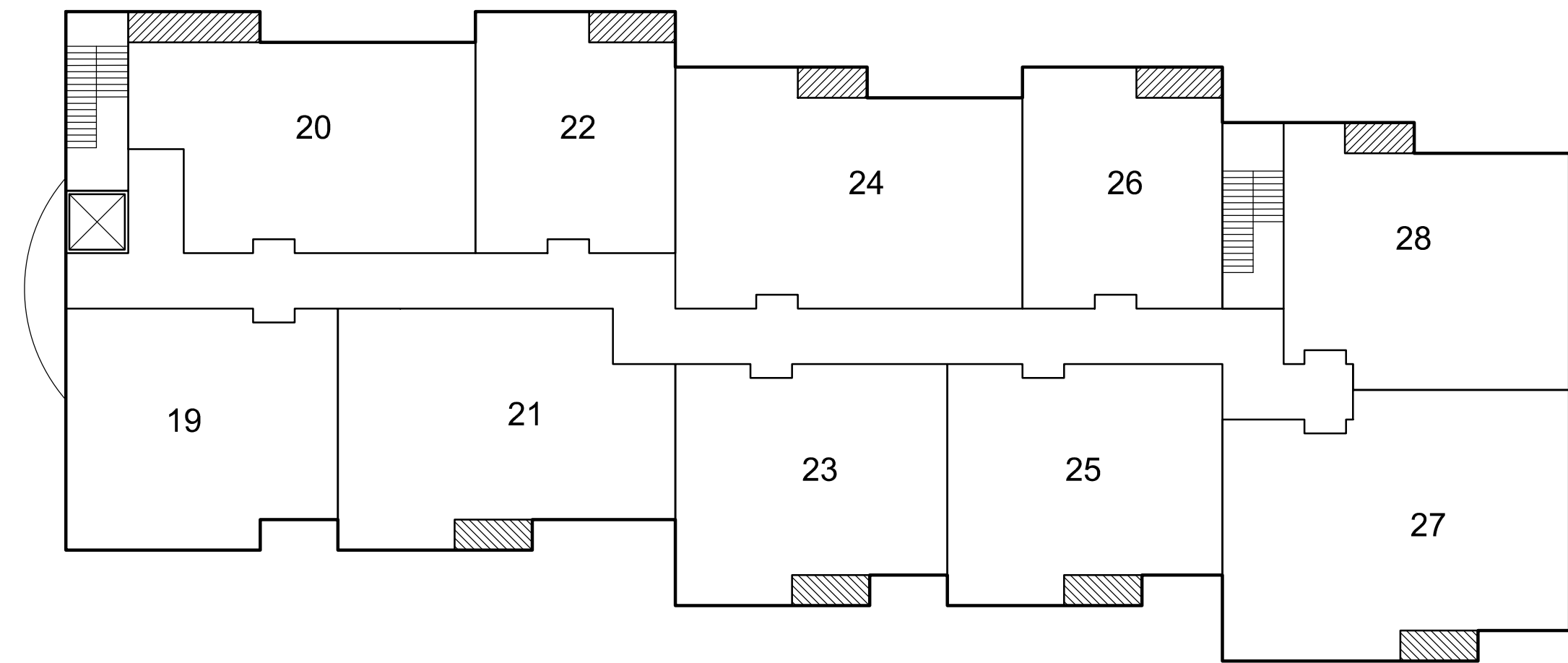
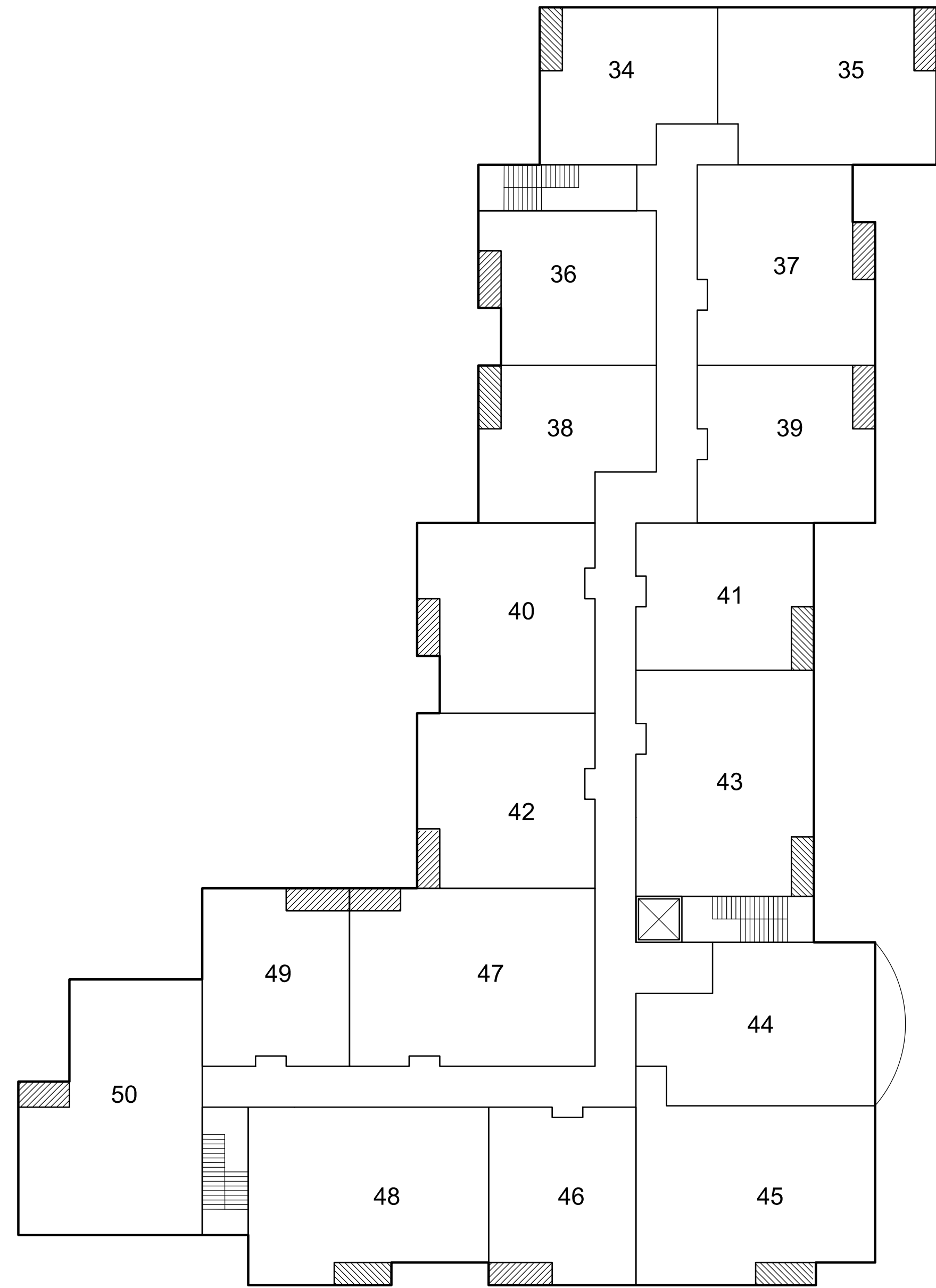
ANY REPRODUCTION, POSSESSION OR USE OF THIS DRAWING WITHOUT THE WRITTEN PERMISSION OF WINSLOW ARCHITECTS INC. IS PROHIBITED. VIOLATORS WILL BE PROSECUTED TO THE FULL EXTENT OF THE LAW.

© 2014 WINSLOW ARCHITECTS, INC.

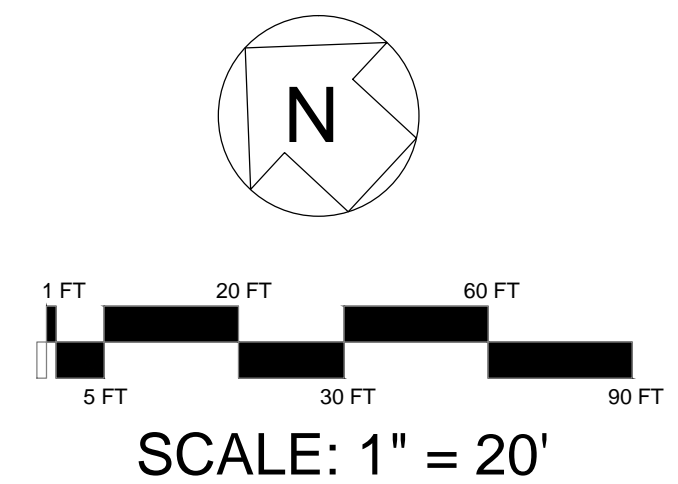
Stamp:

Project number:
16-515

Sheet:
1 | A-1.2



1 NORTH - THIRD FLOOR PLAN
SCALE: 1" = 20'-0"



Date issued:
12-08-16



89 MASSACHUSETTS AVE.
ARLINGTON, MA 02474
P: 781.648.6600
F: 781.648.6601
www.winslowarchitects.com

Owner/Developer:
MEDFIELD MEADOWS LLC

12 Haven Street
Dover, MA 02030

Project:
MEDFIELD
MEADOWS

Meadow Road / Dale Street
Medfield, MA 02052

Drawing:
NORTH -
THIRD FLOOR
PLAN

Revisions:		
No.	Description	Date

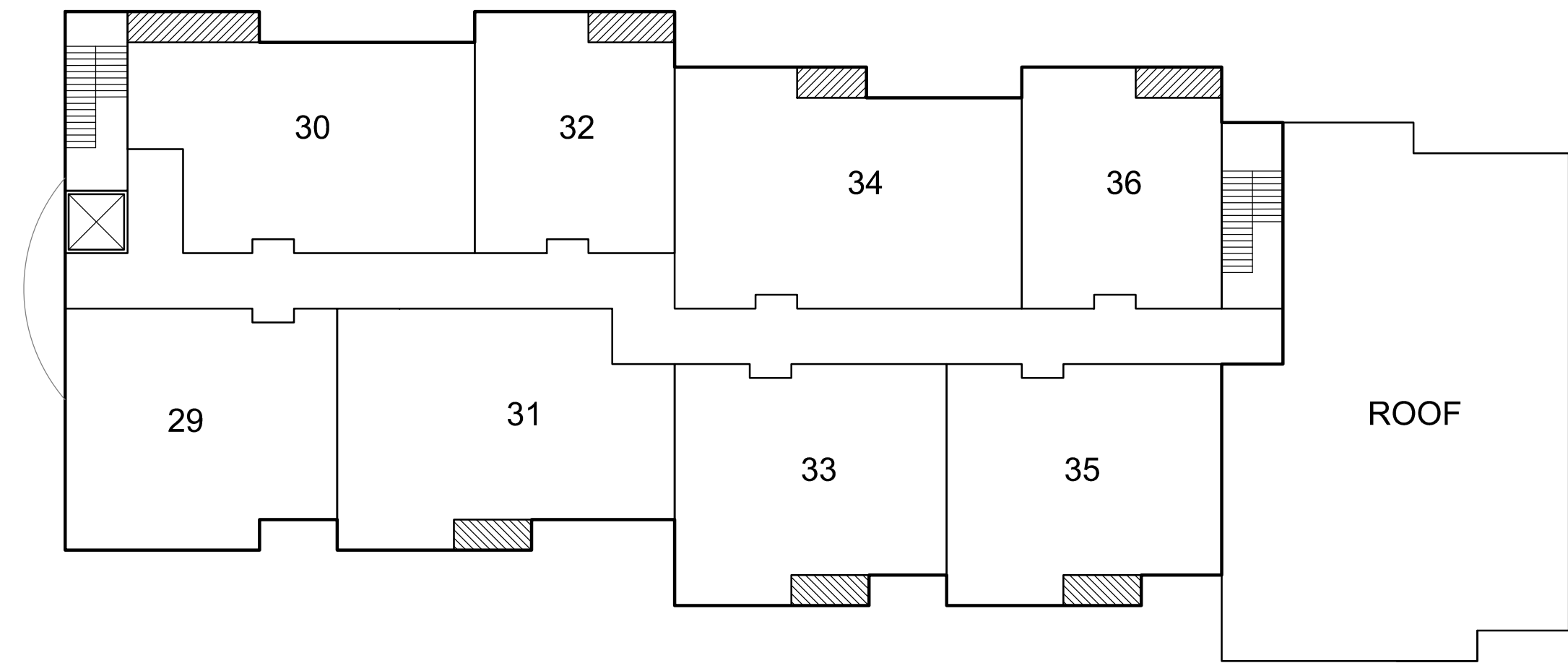
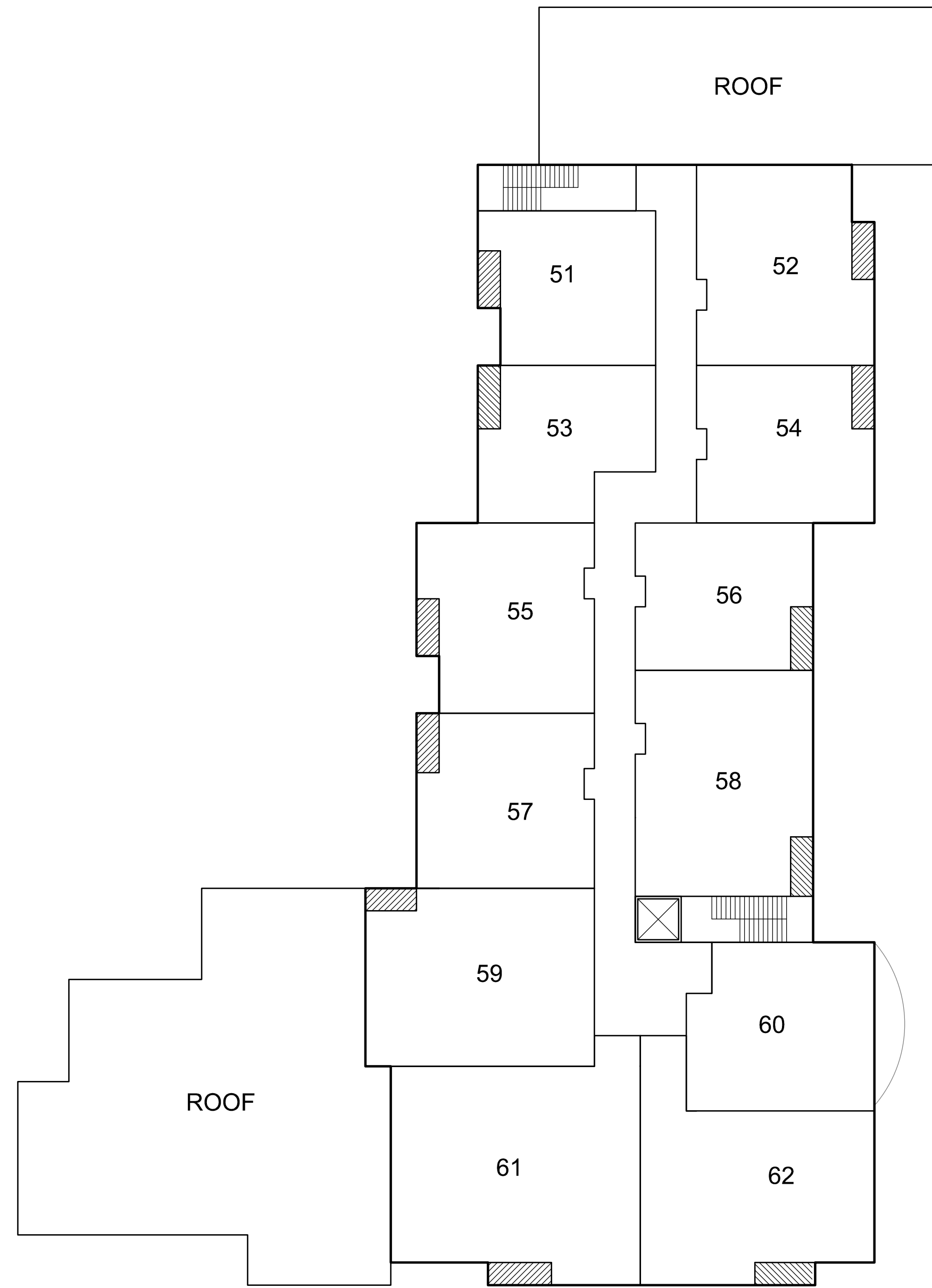
ANY REPRODUCTION, POSSESSION OR USE OF THIS
DRAWING WITHOUT THE WRITTEN PERMISSION OF
WINSLOW ARCHITECTS INC. IS PROHIBITED.
VIOLATORS WILL BE PROSECUTED TO THE FULL
EXTENT OF THE LAW.

© 2014 WINSLOW ARCHITECTS, INC.

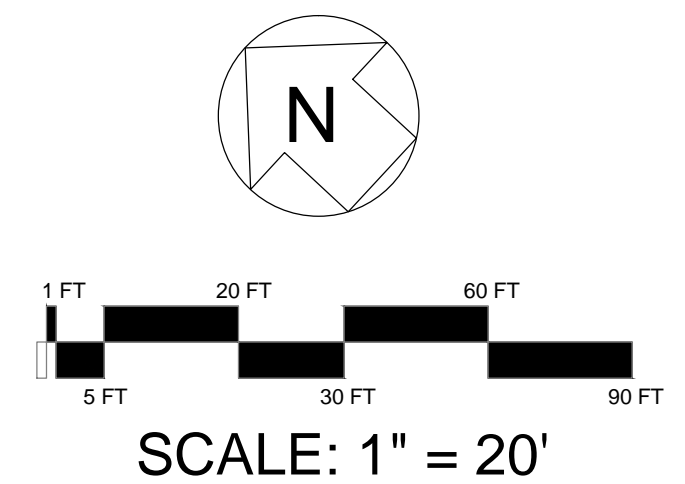
Stamp:

Project number:
16-515

Sheet:
1 | A-1.3



1 NORTH - FOURTH FLOOR PLAN
SCALE: 1" = 20'-0"



Date issued:
12-08-16



89 MASSACHUSETTS AVE.
ARLINGTON, MA 02474
P: 781 648.6600
F: 781 648.6601
www.winslowarchitects.com

Owner/Developer:
MEDFIELD MEADOWS LLC

12 Haven Street
Dover, MA 02030

Project:
MEDFIELD MEADOWS

Meadow Road / Dale Street
Medfield, MA 02052

Drawing:
NORTH -
FOURTH FLOOR
PLAN

Revisions:		
No.	Description	Date

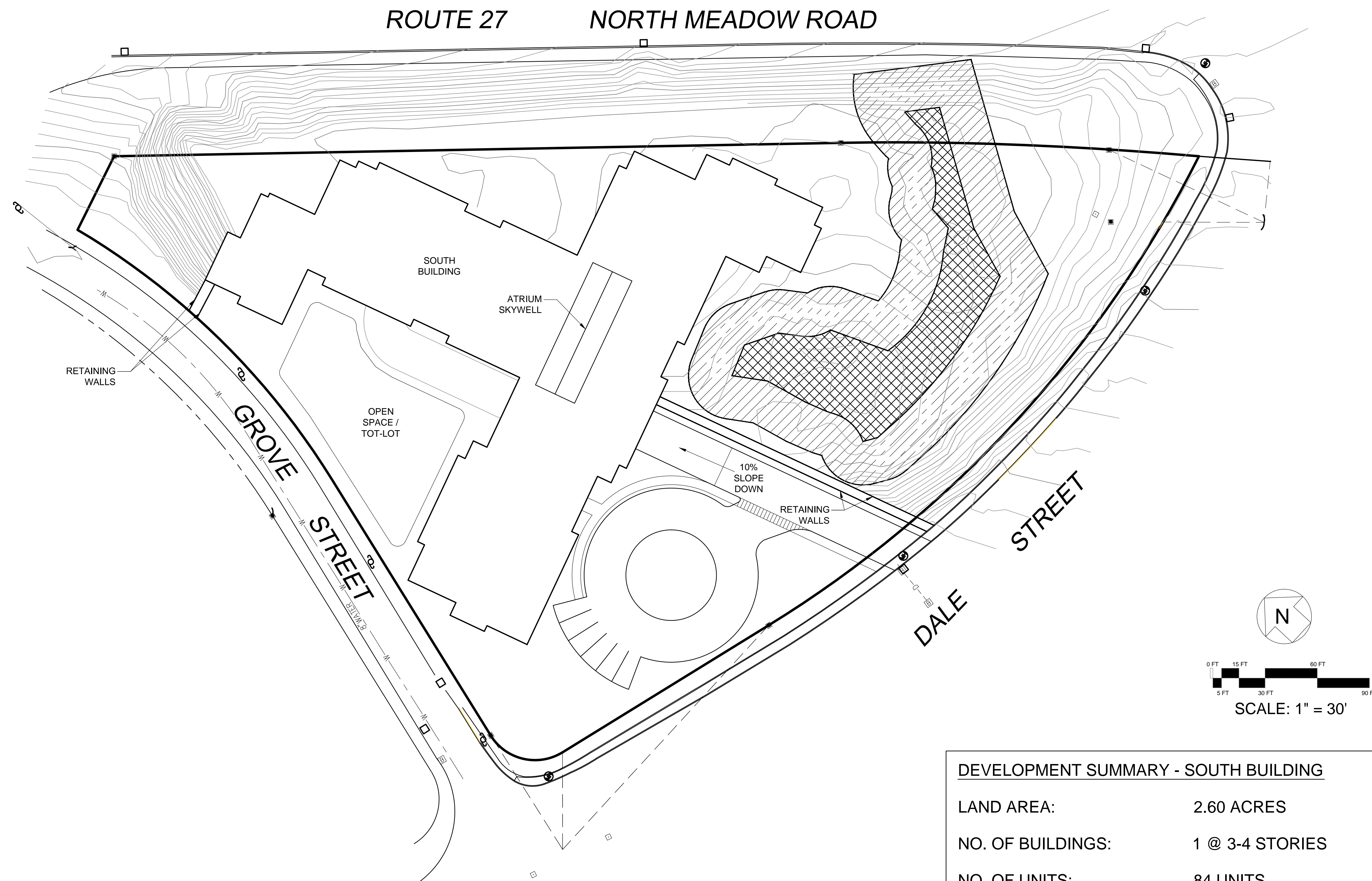
ANY REPRODUCTION, POSSESSION OR USE OF THIS
DRAWING WITHOUT THE WRITTEN PERMISSION OF
WINSLOW ARCHITECTS INC. IS PROHIBITED.
VIOLATORS WILL BE PROSECUTED TO THE FULL
EXTENT OF THE LAW.

© 2014 WINSLOW ARCHITECTS, INC.

Stamp:

Project number:
16-515

Sheet:
1 | A-1.4



1 SOUTH - SITE PLAN

DEVELOPMENT SUMMARY - SOUTH BUILDING

LAND AREA:	2.60 ACRES
NO. OF BUILDINGS:	1 @ 3-4 STORIES
NO. OF UNITS:	84 UNITS
20 - 1 BR	
50 - 2 BR	
14 - 3 BR	
NO. OF PARKING SPACES:	128 SPACES
6 - Surface	
122 - Below Building	

Date issued:
12-08-16



Owner/Developer:
MEDFIELD MEADOWS LLC

12 Haven Street
Dover, MA 02030

Project:
MEDFIELD MEADOWS

Meadow Road / Dale Street
Medfield, MA 02052

Drawing:
SOUTH -
ARCHITECTURAL
SITE PLAN

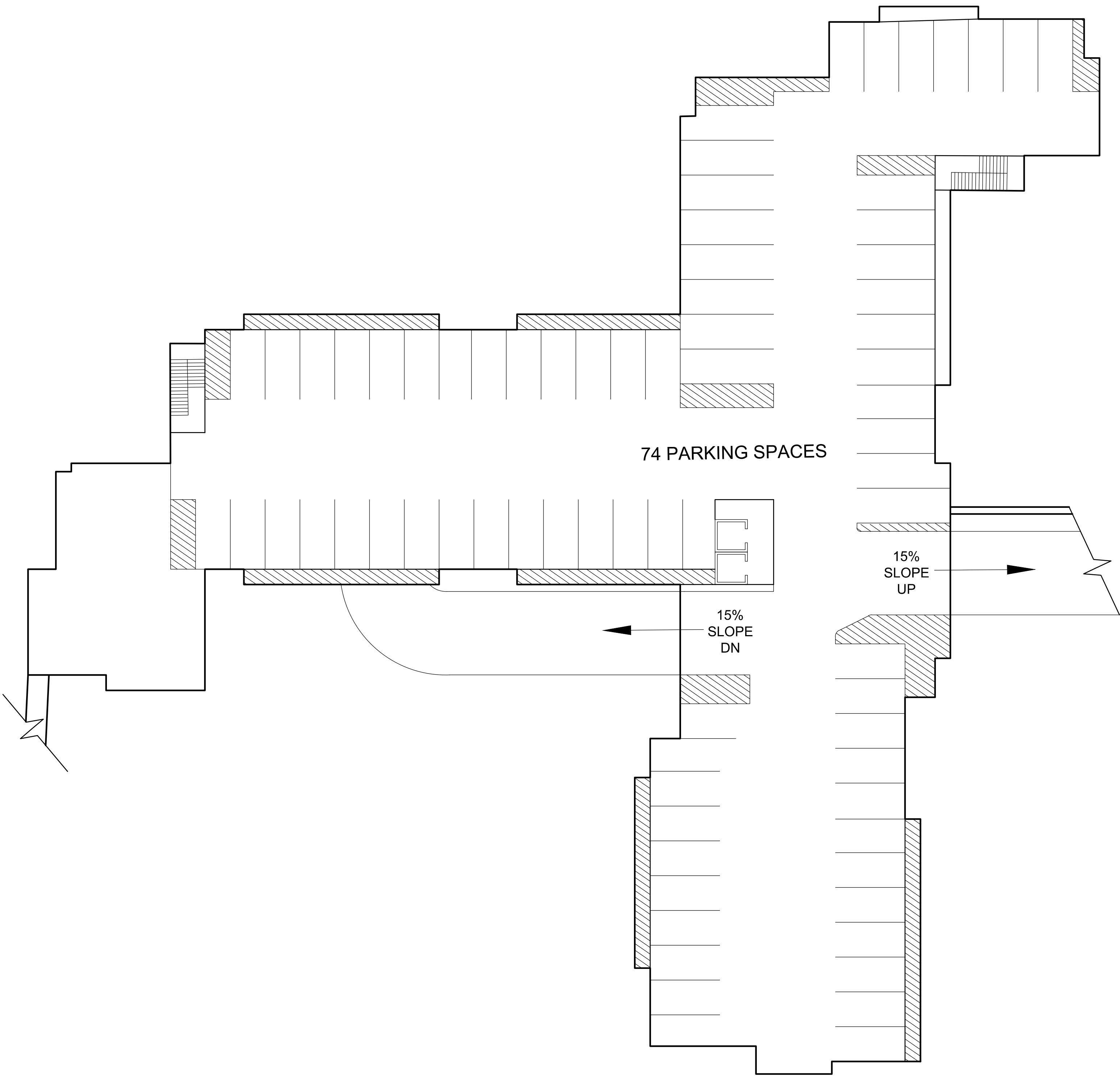
Revisions:		
No.	Description	Date

ANY REPRODUCTION, POSSESSION OR USE OF THIS
DRAWING WITHOUT THE WRITTEN PERMISSION OF
WINSLOW ARCHITECTS INC. IS PROHIBITED.
VIOLATORS WILL BE PROSECUTED TO THE FULL
EXTENT OF THE LAW.
© 2014 WINSLOW ARCHITECTS, INC.

Stamp:

Project number:
16-515

Sheet:
2 | A-0.1



1 SOUTH - UPPER PARKING LEVEL PLAN
SCALE: 1" = 20'-0"

N

1 FT

5 FT

20 FT

30 FT

60 FT

90 FT

SCALE: 1" = 20'

Date issued:
12-08-16



WINSLOW
ARCHITECTS
INC

89 MASSACHUSETTS AVE.
ARLINGTON, MA 02474
P: 781 648.6600
F: 781 648.6601
www.winslowarchitects.com

Owner/Developer:

MEDFIELD MEADOWS LLC

12 Haven Street
Dover, MA 02030

Project:

MEDFIELD
MEADOWS

Meadow Road / Dale Street
Medfield, MA 02052

Drawing:

SOUTH -
UPPER
PARKING
LEVEL
PLAN

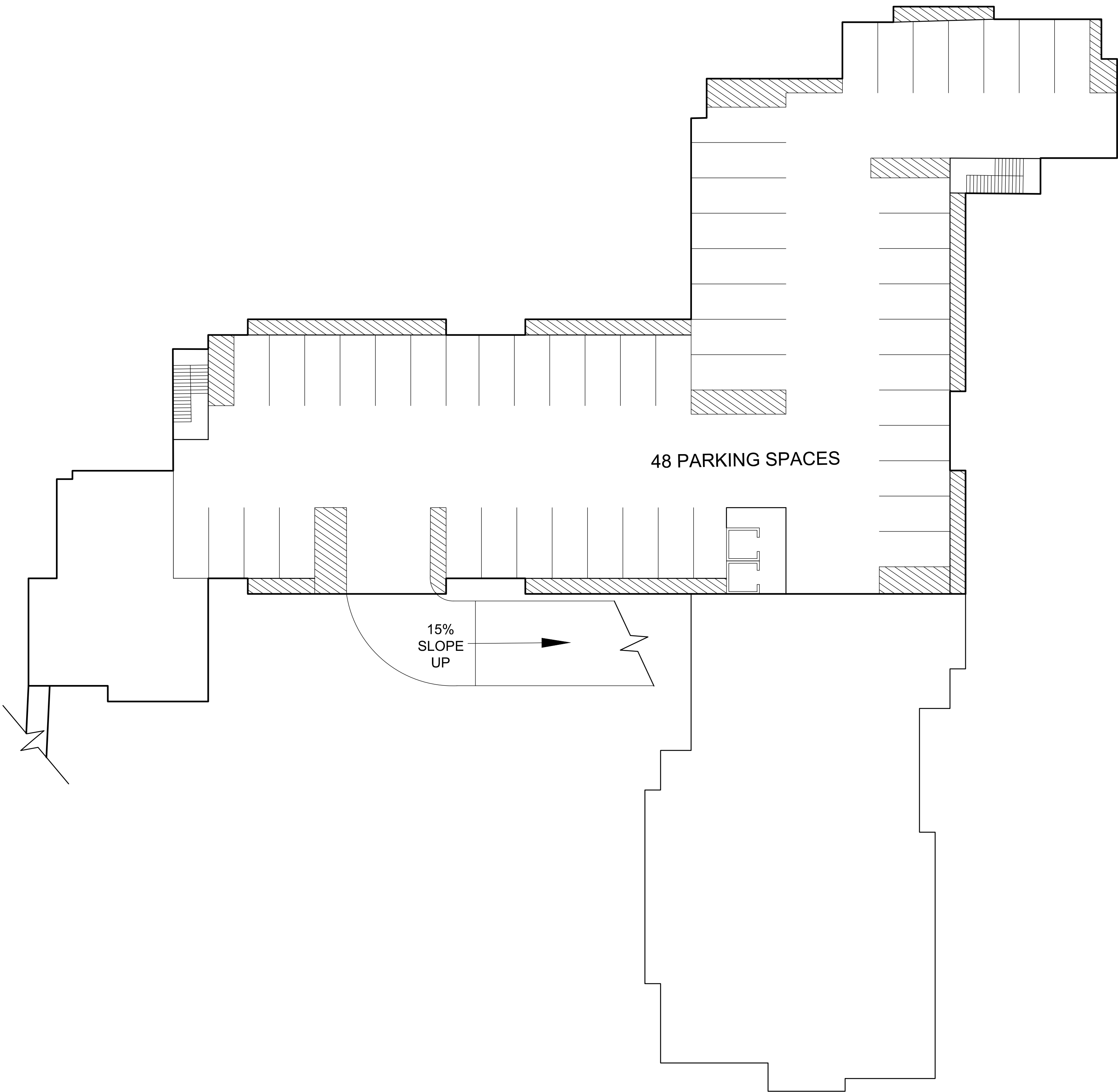
Revisions:

No.	Description	Date

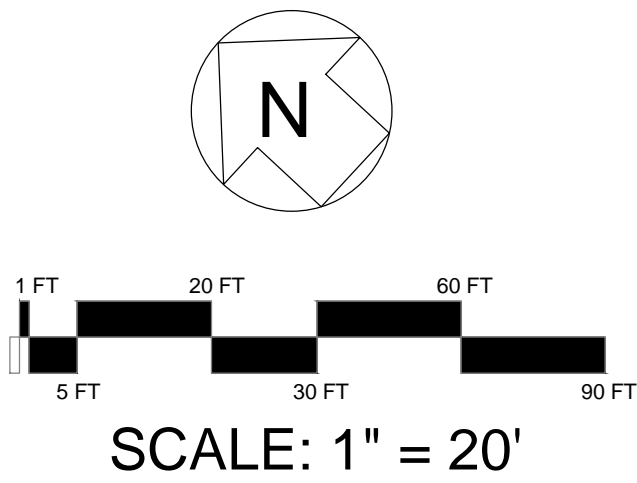
ANY REPRODUCTION, POSSESSION OR USE OF THIS
DRAWING WITHOUT THE WRITTEN PERMISSION OF
WINSLOW ARCHITECTS INC. IS PROHIBITED.
VIOLATORS WILL BE PROSECUTED TO THE FULL
EXTENT OF THE LAW.
© 2014 WINSLOW ARCHITECTS, INC.

Stamp:

Project number:
16-515
Sheet:
2 | A-1.0



1 SOUTH - LOWER PARKING LEVEL PLAN
SCALE: 1" = 20'-0"



Date issued:
12-08-16



WINSLOW
ARCHITECTS
INC

89 MASSACHUSETTS AVE.
ARLINGTON, MA 02474
P: 781 648.6600
F: 781 648.6601
www.winslowarchitects.com

Owner/Developer:

MEDFIELD MEADOWS LLC

12 Haven Street
Dover, MA 02030

Project:

MEDFIELD
MEADOWS

Meadow Road / Dale Street
Medfield, MA 02052

Drawing:

SOUTH -
LOWER
PARKING
LEVEL
PLAN

Revisions:

No.	Description	Date

ANY REPRODUCTION, POSSESSION OR USE OF THIS
DRAWING WITHOUT THE WRITTEN PERMISSION OF
WINSLOW ARCHITECTS INC. IS PROHIBITED.
VIOLATORS WILL BE PROSECUTED TO THE FULL
EXTENT OF THE LAW.

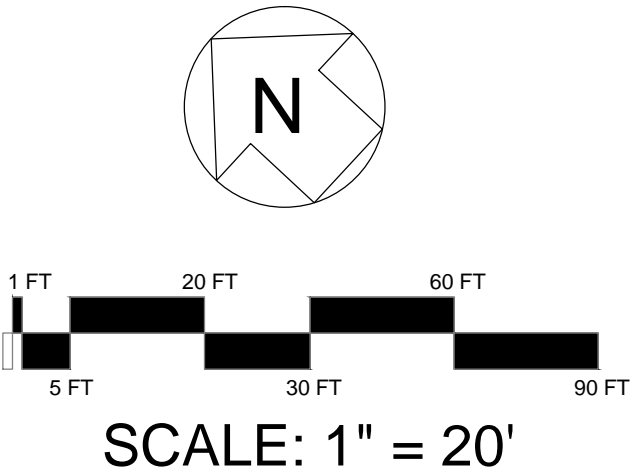
© 2014 WINSLOW ARCHITECTS, INC.

Stamp:

Project number:
16-515
Sheet:
2 | A-1.1



1 SOUTH - FIRST FLOOR PLAN
SCALE: 1" = 20'-0"



Date issued:

12-08-16



89 MASSACHUSETTS AVE.
ARLINGTON, MA 02474
P: 781 648.6600
F: 781 648.6601
www.winslowarchitects.com

Owner/Developer:

MEDFIELD MEADOWS LLC

12 Haven Street
Dover, MA 02030

Project:

MEDFIELD MEADOWS

Meadow Road / Dale Street
Medfield, MA 02052

Drawing:

SOUTH -
FIRST FLOOR
PLAN

Revisions:

No.	Description	Date

ANY REPRODUCTION, POSSESSION OR USE OF THIS
DRAWING WITHOUT THE WRITTEN PERMISSION OF
WINSLOW ARCHITECTS INC. IS PROHIBITED.
VIOLATORS WILL BE PROSECUTED TO THE FULL
EXTENT OF THE LAW.

© 2014 WINSLOW ARCHITECTS, INC.

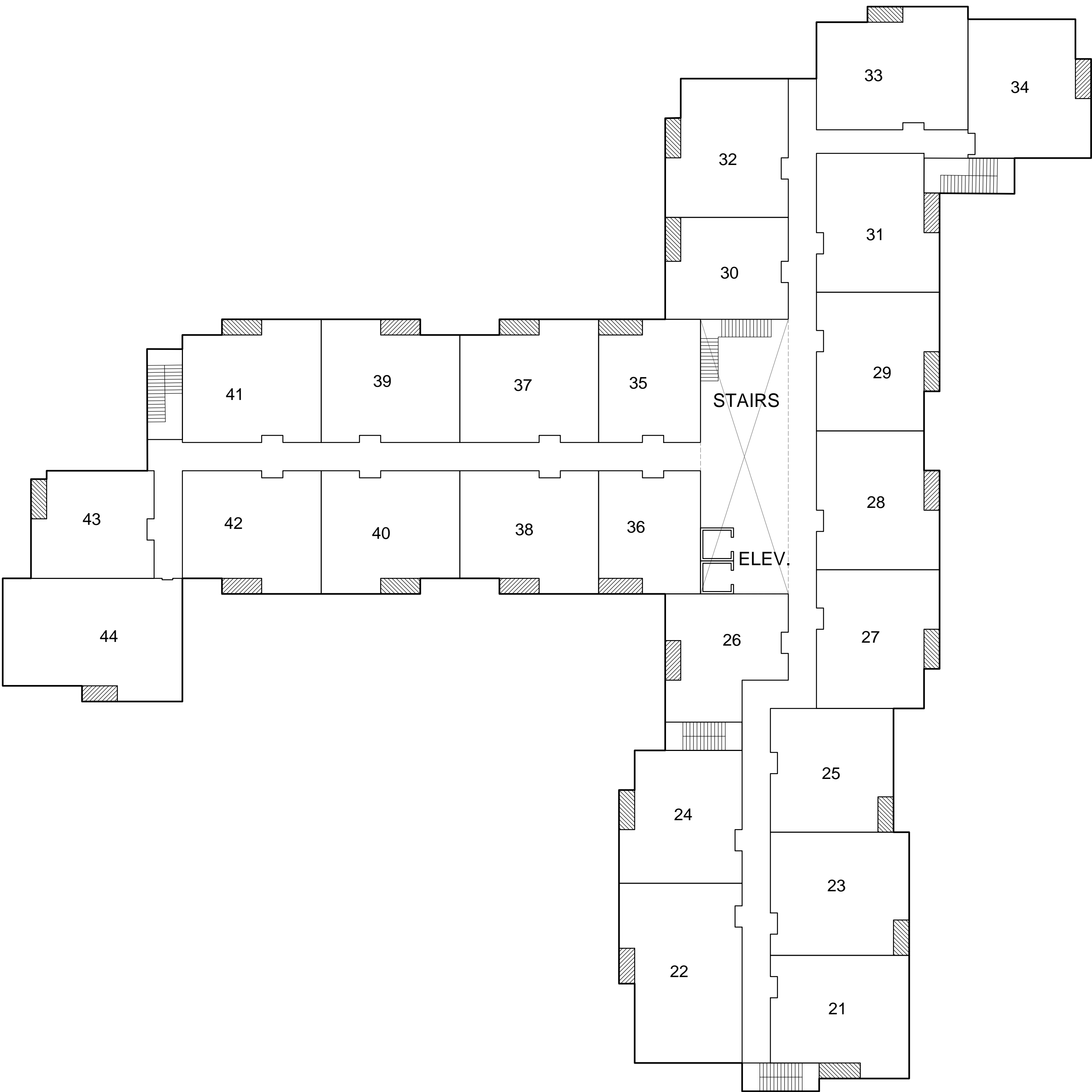
Stamp:

Project number:

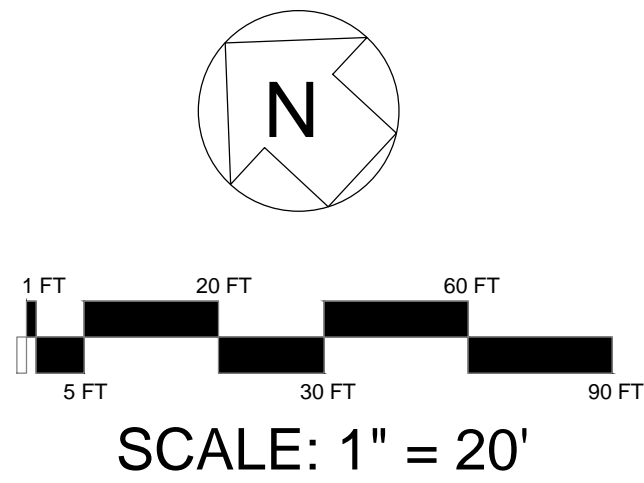
16-515

Sheet:

2 | A-1.2



1 SOUTH - SECOND FLOOR PLAN
SCALE: 1" = 20'-0"



Date issued:
12-08-16



89 MASSACHUSETTS AVE.
ARLINGTON, MA 02474
P: 781.648.6600
F: 781.648.6601
www.winslowarchitects.com

Owner/Developer:
MEDFIELD MEADOWS LLC

12 Haven Street
Dover, MA 02030

Project:
MEDFIELD MEADOWS

Meadow Road / Dale Street
Medfield, MA 02052

Drawing:
SOUTH - SECOND FLOOR PLAN

Revisions:		
No.	Description	Date

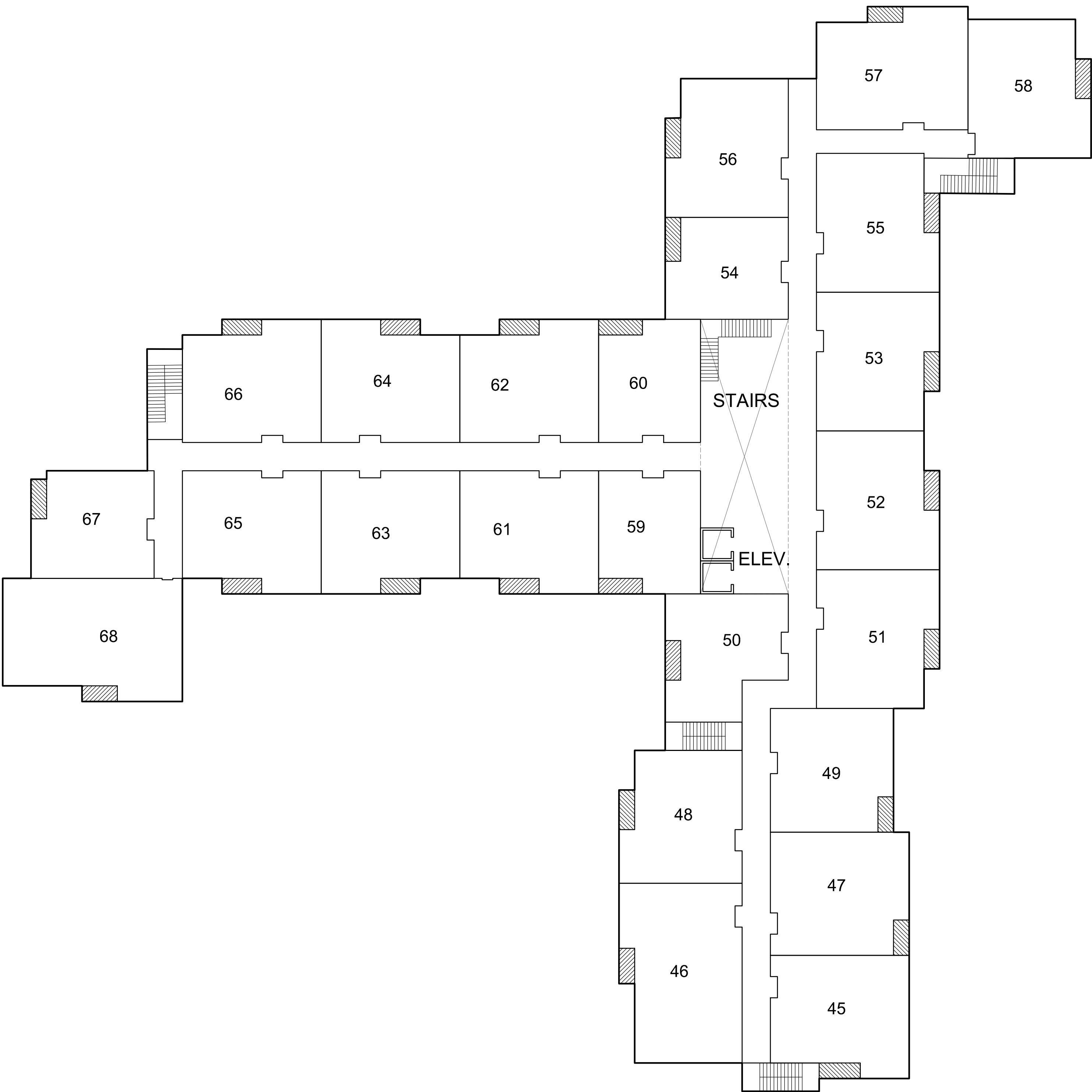
ANY REPRODUCTION, POSSESSION OR USE OF THIS DRAWING WITHOUT THE WRITTEN PERMISSION OF WINSLOW ARCHITECTS INC. IS PROHIBITED. VIOLATORS WILL BE PROSECUTED TO THE FULL EXTENT OF THE LAW.

© 2014 WINSLOW ARCHITECTS, INC.

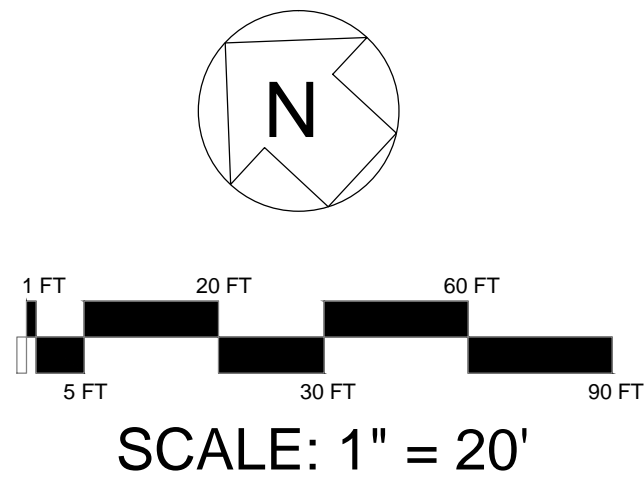
Stamp:

Project number:
16-515

Sheet:
2 | A-1.3



1 SOUTH - THIRD FLOOR PLAN
SCALE: 1" = 20'-0"



Date issued:
12-08-16


WINSLOW
ARCHITECTS
INC
89 MASSACHUSETTS AVE.
ARLINGTON, MA 02474
P: 781.648.6600
F: 781.648.6601
www.winslowarchitects.com

Owner/Developer:
MEDFIELD MEADOWS LLC
12 Haven Street
Dover, MA 02030

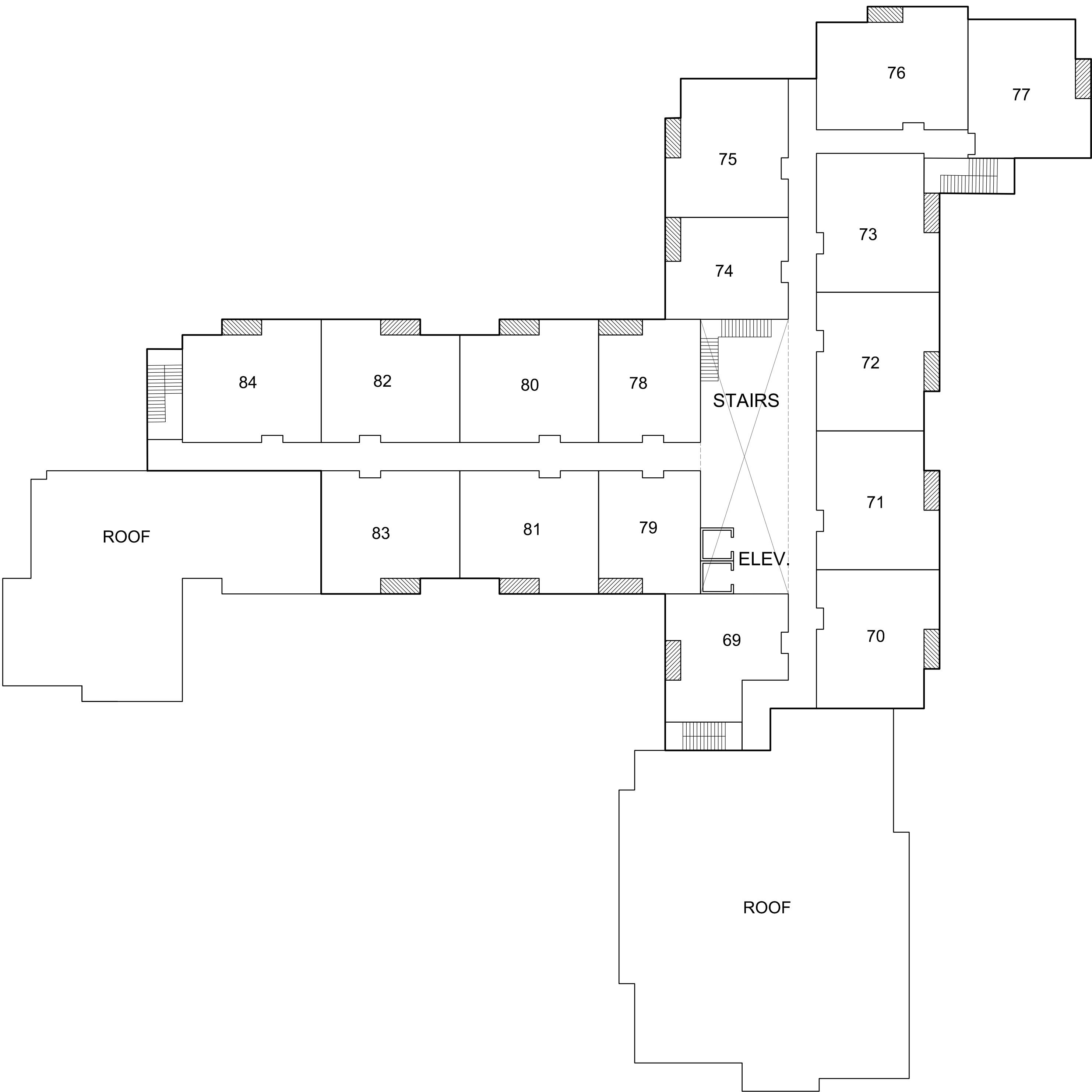
Project:
MEDFIELD
MEADOWS
Meadow Road / Dale Street
Medfield, MA 02052

Drawing:
SOUTH -
THIRD FLOOR
PLAN

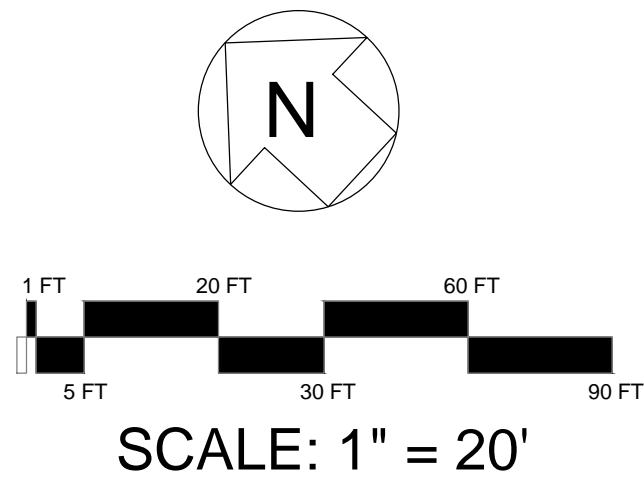
Revisions:		
No.	Description	Date

ANY REPRODUCTION, POSSESSION OR USE OF THIS
DRAWING WITHOUT THE WRITTEN PERMISSION OF
WINSLOW ARCHITECTS INC. IS PROHIBITED.
VIOLATORS WILL BE PROSECUTED TO THE FULL
EXTENT OF THE LAW.
© 2014 WINSLOW ARCHITECTS, INC.

Stamp:
Project number:
16-515
Sheet:
2 | A-1.4



1 SOUTH - FOURTH FLOOR PLAN
SCALE: 1" = 20'-0"



Date issued:
12-08-16



89 MASSACHUSETTS AVE.
ARLINGTON, MA 02474
P: 781 648.6600
F: 781 648.6601
www.winslowarchitects.com

Owner/Developer:
MEDFIELD MEADOWS LLC

12 Haven Street
Dover, MA 02030

Project:
MEDFIELD MEADOWS

Meadow Road / Dale Street
Medfield, MA 02052

Drawing:
SOUTH -
FOURTH FLOOR
PLAN

Revisions:		
No.	Description	Date

ANY REPRODUCTION, POSSESSION OR USE OF THIS
DRAWING WITHOUT THE WRITTEN PERMISSION OF
WINSLOW ARCHITECTS INC. IS PROHIBITED.
VIOLATORS WILL BE PROSECUTED TO THE FULL
EXTENT OF THE LAW.

© 2014 WINSLOW ARCHITECTS, INC.

Stamp:

Project number:
16-515

Sheet:
2 | A-1.5